



Next Gen Automation

BIGWIG
TECHNOLOGIES

Product Highlights



Technology

Latest Technology with Innovation

- Built using latest Wireless Master/Slave Technology
- IoT (Internet of Things) and W-CDC (Wireless Cross Device Communication) Enabled.
- Add endless Slave Modules to Master as per needs / requirement.



Wireless

Complete Wireless Freedom & Beyond !

- Uses Web Protocol (Internet / Network) for communication
- Monitor and Control system using Mobile App; from anywhere in the world.



Features

Enhanced Features

- Dual Control - Manual and Wireless operations of Switches, Dimers, Irrigation Valves, etc.
- Shutdown / Resume all Systems with single click using Mobile App.
- Built-in Panic Button. Alert family members in emergency situations by clicking Panic button.
- Receive Mobile Alerts and Email Notifications.



Scheduler

Schedule Routine Tasks

- Schedule unlimited lighting, irrigation, etc routines (e.g. Varanda Lights, Garden Sprinklers).
- Create unlimited scheduled Timer Routines with duration starting from 5 seconds.
- Enable / Disable schedule with one click using Mobile App or Web Console



Modes

Modes / Scenes

- Create unlimited custom Modes / Scenes.
- Activate Modes / Scenes by single click using Mobile App.
- Enhanced Auto-Rerun mode to Resume irrigation cycles post power failures.



Statistics

View Historical Data Trends

- View historical data / logs of lighting, irrigation, etc systems.
- Easy options to export selected historical data in Excel, Tab delimited or Plain text formats.



Installation

Installation and Maintenance

- Quick and easy installation. Save time, efforts and infrastructure costs.
- Configuration, Monitoring and Maintenance tasks can be performed remotely.

Maestro - The Controller



Maestro

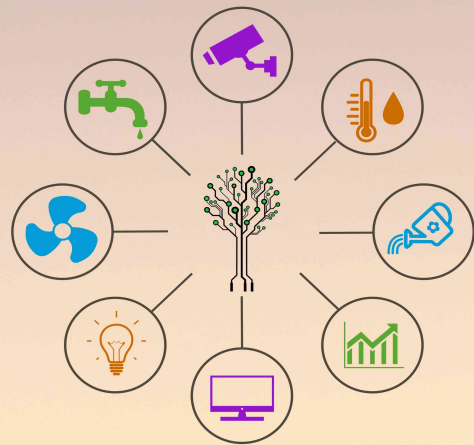
Experience the magic of Maestro !

Maestro is one of the most advanced automation product that provides integrated solutions in the segment of lightings, enhanced security and irrigation. It is a perfect blend of modern technology with simplified user interface. It addresses complex requirements and maximizes the usage of existing devices & infrastructure; making it different from other available automation solutions.

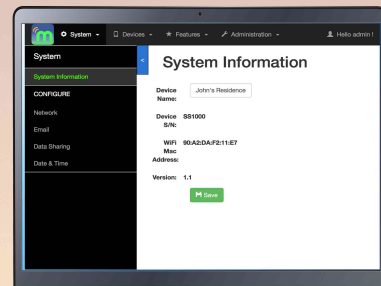
Maestro gives complete Wireless Freedom and redefines the way we live life. With Maestro, you can control devices using your favourite smart phone, tablets, laptops / computers, etc, wirelessly, anytime and anywhere from network. With Internet enabled networks, you can further extend the control to anywhere in the world.

Maestro and its family devices enable advanced automation solutions. Maestro is the master/controller, which wirelessly controls all its family devices. All devices are designed considering existing systems/infrastructure so that they can be easily installed without major changes. The configuration and control of family devices is even simpler using Maestro's Web Console and Mobile App (iOS and Android).

User Interfaces:



Integrated Control for all Systems



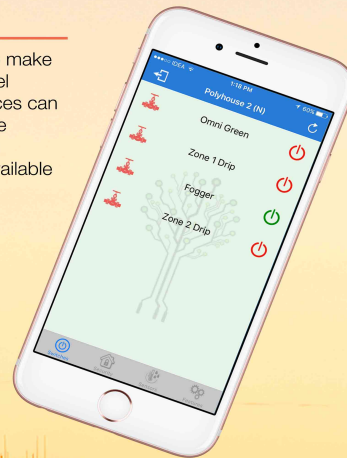
Web Console

Web Console is Control Panel of Maestro. It is primarily used to add / modify / delete and configure Maestro family devices. It is also used to set operating parameters for Maestro.

The Web Console is a browser based application which can be accessed from any computing device containing browser, from anywhere in the network. If network is connected to Internet, then Web Console can be accessed from anywhere in the world.

Mobile App

Maestro mobile app named "Maestro Ctrl" is designed to make end user operations simple and easy. Its rich look and feel makes others envy. Using the Mobile App, all family devices can be operated anywhere within the same network. It can be operated from anywhere in the world provided Internet is enabled on Maestro & Mobile device. "Maestro Ctrl" is available on iOS and Android Platforms.



Maestro - Family Devices



E - Switch (Electrical Devices)

E-Switch is used to control electrical switching devices like lights, fans, dimmers, etc. The E-Switch module is installed inside the Switch Panel. E-Switch module communicates wirelessly with Maestro thereby removing the need for infrastructure changes.

E-Switch enables dual control enabling manual and wireless operations of switches / dimmers at the same time. Using Maestro's Web Console, users can provide custom names to switch boards and individual switches.

Applications:

1. Manual and Wireless control of electrical switching devices such as lights, fans, etc.

Z - Switch (Irrigation Controls)

Z-Switch is used in automating irrigation systems. It is widely used in the segment of Turf & Landscapes, Agriculture, Fountains, etc.

Z-Switch operates Solenoid Valves to control irrigation lines. It wirelessly communicates with Maestro thereby removing any major changes in existing system/infrastructure. It is compatible with majority of solenoid valves available in market.

Z-Switch enables dual control enabling manual and remote operation of irrigation system.

Z-Switch Applications:

1. Agriculture
2. Polyhouses
3. Turf and Landscapes
4. Gardens (Public and Home)
5. Fountains

Z-Switch Implementations:

1. Drip Irrigation
2. Foggers / Misters
3. Sprinklers
4. Fertigation System
5. Filtration System



Z - Sensors (Advanced Systems)

Maestro is enabled with various types of sensors enabling operations without human interference. Sensors include temperature, moisture, water level, pH, electrical conductivity, etc.

Using Maestro's Web Console, thresholds and trigger operations of each sensor can be configured. Using Maestro's Mobile App, Users can see live readings on their favourite computing device.

Z-Sensors enables machine to machine communication where lighting, irrigation, security, etc devices can be activated based on configured thresholds.

Using Maestro's Web Console, historical data can be easily extracted for performing root-cause / trend analysis.

Applications:

1. Deployments where it is difficult to physically monitor and check green systems.
2. Monitor and control climatic conditions in Polyhouse.
3. Agriculture professionals, researchers and Horticulturist.
4. Building management systems.



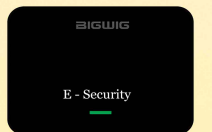
E - Security (Enhanced Security)

E-Security provides enhanced security features that is traditionally not available in existing systems. It contains in-built motion sensor, smoke detector, door bell inputs, panic speaker with flexibility to attach external hooter / siren. It does not contain Camera.

Its unique features include "Snap on Bell", "Panic Mode" and "Guard Mode"; bridges the gap in security requirements that is missing in existing systems.

Applications:

1. Housing Societies / Homes / Farm Houses
2. Commercial and Industrial Buildings / Premises



Product Specifications

Maestro

Parameters	Values
Input Voltage	5 Volts (DC)
Input Current (max)	0.8 A
Supply Socket	Micro USB
WiFi	802.11b/g/n 2.4GHz
Ethernet Port	802.3 10/100 Mbit/s
Communication Range (LOS)	1.8 Km
Antenna Type	Omni
Dimensions	80 x 117 x 28
Mount Slots	No

E - Security (Enhanced Security)

Parameters	Values
Input Voltage	9 Volts (DC)
Input Current (max)	0.6 Ampere
Sensors	Smoke + Motion
Built-in Speakers	Yes
External Attachments	Door Bell, Hooter/Siren
Antenna Type	Omni
Communication Range (LOS)	1.8 Km
Dimensions	117 x 80 x 32
Mount Slots	Yes

E - Switch (Lightings / Electrical Devices)

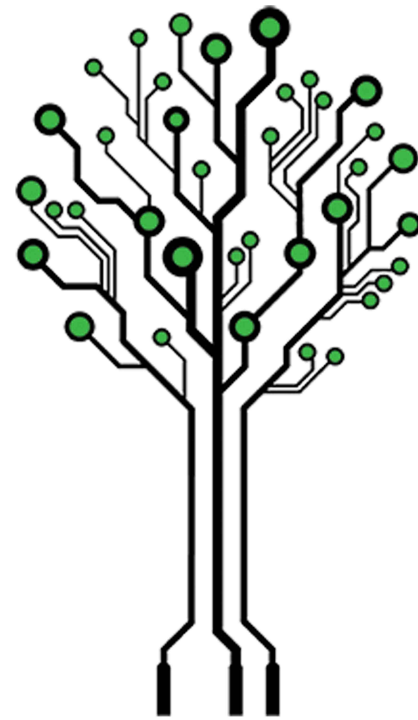
Parameters	Sub Models					
	4R-I	4R-O	3S1R-I	D1S1R-I	3R-I	S-I
Input Voltage	170-240 Volts (AC)					
Input Current (max)	0.6 Ampere					
Supply Socket	Terminal Screw	3 Pin	Terminal Screw	Terminal Screw	Terminal Screw	Terminal Screw
Total No. of Switches	4	4	4	4	3	3
No. of Relay (6A)	4	4	1	1	3	-
No. of Dimmer (1.2A)	-	-	-	2	-	-
No. of Soft Switches (1.2A)	-	-	3	1	-	3
Antenna Type	Full Dipole	Omni	Full Dipole	Full Dipole	Full Dipole	Full Dipole
Communication Range (LOS)	0.5 Km	1.8 Km	0.5 Km	0.5 Km	0.5 Km	0.5 Km
Indoor / Outdoor	Indoor	Outdoor	Indoor	Indoor	Indoor	Indoor
Dimensions	112 x 69 x 25	130 x 155 x 58	112 x 69 x 25	112 x 69 x 25	84 x 69 x 25	84 x 69 x 25
Mount Slots	Yes	Yes	Yes	Yes	Yes	Yes

Z - Sensors (Advanced Systems)

Parameters	Sub Models				
	TM-A	TM-S	WL	pH	EC
Input Voltage	9 Volts (DC)				
Input Current(Max)	0.6 Ampere	0.6 Ampere	0.6 Ampere	0.6 Ampere	0.6 Ampere
Supply Socket	DC Jack	DC Jack	DC Jack	3 Pin	3 Pin
Solar Support	Yes	Yes	Yes	No	No
Sensor 1	Temperature	Temperature	Water Level	pH	EC
Sensor 2	Humidity	Humidity	N/A	N/A	N/A
Display	No	No	No	3" TFT	3" TFT
Antenna Type	Omni	Omni	Omni	Omni	Omni
Communication Range (LOS)	1.8 Km	1.8 Km	1.8 Km	1.8 Km	1.8 Km
Indoor / Outdoor	Indoor	Outdoor	Outdoor	Outdoor	Outdoor
Dimensions	95 x 52 x 40	95 x 52 x 40	95 x 52 x 40	130 x 155 x 58	130 x 155 x 58
Mount Slots	Yes	Yes	Yes	Yes	Yes

Z - Switch (Irrigation Controls)

Parameters	Sub Models	
	AC-4 / AC-2	DC-L-4 / DC-L-2
Input Voltage	24 Volts (AC)	9 Volts (DC)
Input Current (Max)	2 Ampere	0.6 Ampere
Supply Socket	DC Jack	DC Jack
Solar Support	No	Yes
Solenoid Valve Compatibility	24 Volts (AC)	9V DC Latching
No of controllable Valves	4 / 2	4 / 2
Antenna Type	Omni	Omni
Communication Range (LOS)	1.8 Km	1.8 Km
Indoor / Outdoor	Outdoor	Outdoor
Dimensions	130 x 155 x 58	130 x 155 x 58
Mount Slots	Yes	Yes



Innovation at **W**ork . . .



BIGWIG
TECHNOLOGIES